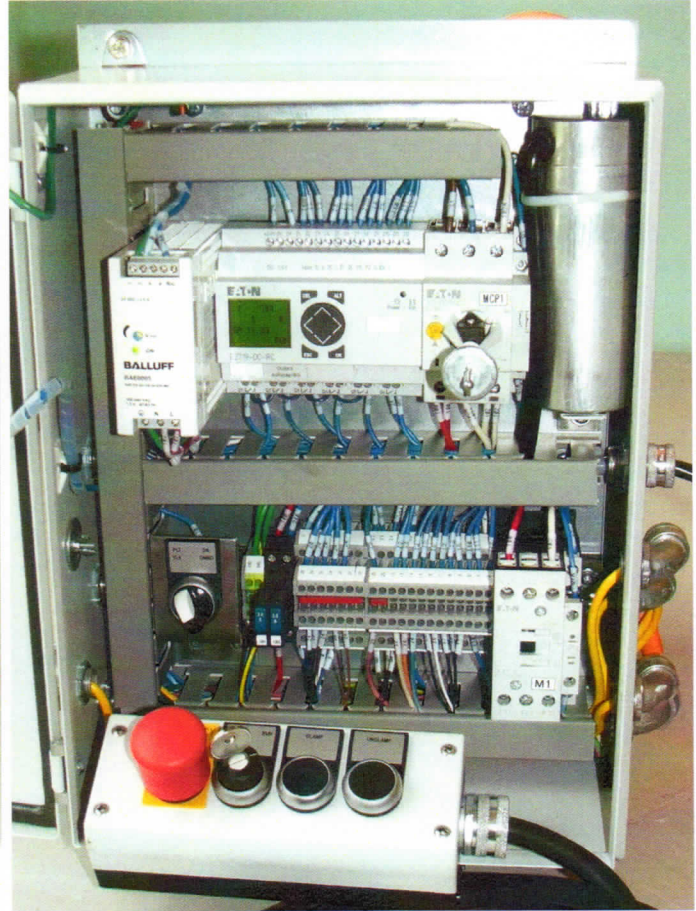


5000 psi Pendant Controlled Single Phase Power Unit



Pressure:	5000 psi
Flow:	60 in ³ /min
Voltage:	110 VAC 1-Phase
Amps:	11.6 full-load
Valves:	24 VDC
Switches:	24 VDC
Filtration:	20 micron absolute

- The most advanced workholding power unit ever created
- Operates Single and Double Acting “On-Demand” & “Pallet Valve” or “Dump Pump” circuits
- UL508A built electrical panel with disconnect includes Clamp, Unclamp, Jog/Run & E-stop control pendant
- Electronic pressure switch with pressure display continuously monitors Clamp & Unclamp pressures and switch set points
- Includes a pressure filter and safety switches for “filter-full,” fluid level & high temperature
- Controller monitors power unit for any system faults and provides diagnostic messages in English


**Clamping
Solutions, Inc.**
 Hydraulic Intelligence™

(847) 840-5027
salescs@clampingsolutions.com
www.clampingsolutions.com